



OSTEOGENICS

B I O M E D I C A L



Regeneration Products Catalog

osteogenics.com



Ordering

Our customer service professionals are available from 7 AM to 7 PM CST, Monday through Thursday, and 7 AM to 5 PM CST on Fridays. Orders may be placed by the following methods:

TOLL-FREE	1.888.796.1923 (US & Canada only)
INTERNATIONAL	+1 806.796.1923
FAX	806.796.0059
EMAIL	sales@osteogenics.com
WEBSITE	www.osteogenics.com
ADDRESS	Osteogenics Biomedical, Inc. 4620 71st Street Building 78-79 Lubbock, TX 79424

Shipping

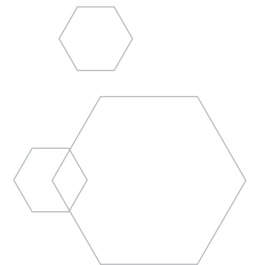
Orders placed by 5 PM CST will be shipped the same day unless specified otherwise by your customer service professional. Standard shipping is 2nd Day delivery with UPS. Due to our volume discounts with UPS, our 2nd Day rate is usually less than standard ground shipping and assures better tracking and customer support. Overnight delivery is available at discounted rates as well.

Payment

We make it easy for you. We accept all major credit cards, or domestic orders may choose payment terms of Net 15. All payments are in US Dollars.

Table of Contents

	Bone Graft Materials
4	enCore® Allografts
6	Zcore™ Porcine Xenograft Particulate
8	NovaBone® Dental Putty
8	NovaBone® Morsels
	Resorbable Barrier Membranes
10	Cytoplast™ RTM Collagen
11	Cytoplast™ RTMPlug, RTMFoam, & RTM Tape
12	Vitala® Porcine Derived Collagen
	Non-Resorbable Barrier Membranes
13	Cytoplast™ TXT-200 & TXT-200 Singles
14	Cytoplast™ Ti-250 & Ti-150 Titanium-Reinforced
17	Cytoplast™ PTFE Suture
	Fixation Systems
18	Master-Pin-Control
19	Pro-Fix™ Membrane Fixation
19	Pro-Fix™ Individual Components
20	Pro-Fix™ Tenting
21	Pro-Fix™ Bone Fixation
	Bone Scrapers & Bone Mill
22	Micros
23	Safescraper® Twist – Curve Version
24	Smartscraper
25	R. Quétin Bone-Mill
26	Selection of Applicable References



Pricing

Prices are subject to change. However, we will make every effort to notify you in advance of a change. We offer the following discounts on bulk purchases:

Buy 5, Get 1 FREE* on all products except Cytoplast™ PTFE Suture.

Buy 10 Boxes, Get 1 FREE on Cytoplast™ PTFE Suture.

*Mixing and matching different products is permitted; the least expensive product will be credited as free.

Availability

We know how frustrating back-orders are, so we carry enough inventory to ensure that, statistically, we have your product on hand 99% of the time. In the event of a back-order, we will notify you at the time of your order and give you an estimated ship date.

Satisfaction Assurance

If you are not completely satisfied with our products, call us and we will arrange for a replacement, exchange, or refund. Unopened boxes may be returned within 30 days from the invoice date for a full refund. Opened boxes may be returned for product exchange within 90 days of the invoice date; Quétin Bone-Mill returns are subject to a 25% restocking fee. Call customer service at 1.888.796.1923 for return authorizations.

Unique Features of enCore® 70|30 Combination Allograft

Tested twice to ensure its osteoinductivity

- Pre-sterilization *in vitro* BMP-2 assay
Prior to packaging and terminal sterilization, every lot is tested for a minimum threshold of BMP-2
All lots that fail to meet the threshold are discarded.
- Post-sterilization *in vivo* osteoinductivity verification
Every lot undergoes a final *in vivo* post-sterilization test to verify its osteoinductive potential

Best practices in safety

- Tissue processed by Allotech, an FDA-registered and AATB accredited tissue bank
- Single donor per lot
- Terminally sterilized by low-dose e-beam irradiation to a sterility assurance level of 10^{-6}

A synergistic combination

- Combines the synergistic characteristics of slowly resorbing, space-maintaining mineralized cortical bone with osteoinductive demineralized matrix to provide an optimized environment for the regeneration of vital bone

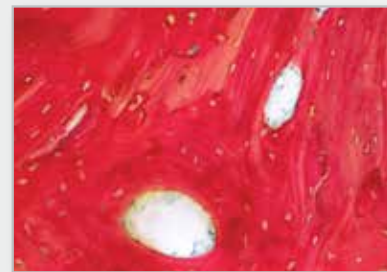
Chair-side efficiency

- 70/30 combination graft is pre-mixed to reduce inventory and reduce chair-side preparation
- Double-sterile packaged for aseptic presentation in the surgical field

Representative histology taken at 6 months from a case using combination allograft

86% vital bone
14% residual graft
51% bone, 49% Marrow

Histology by Michael Rohrer, DDS, MS
University of Minnesota



enCore® 70|30 Combination Allograft (FDBA & DFDBA)
70% Mineralized Cortical Allograft and 30% Demineralized Allograft

.25 mm - 1.0 mm Particle Size

C73050	0.5 cc
C73100	1.0 cc
C73150	1.5 cc
C73250	2.5 cc



enCore® 50|50 Cortical & Cancellous Allograft
50% Mineralized Cortical Allograft and 50% Mineralized Cancellous Allograft

0.5 mm - 1.25 mm Particle Size

CM55050	0.5 cc
CM55100	1.0 cc
CM55150	1.5 cc
CM55250	2.5 cc



enCore® OD 30|70 Cortical & Cancellous Allograft
30% Mineralized Cortical Allograft and 70% Mineralized Cancellous Allograft

0.25 mm - 1.0 mm Particle Size

OD37050	0.5 cc
OD37100	1.0 cc
OD37150	1.5 cc
OD37250	2.5 cc

NEW



enCore® Mineralized Cortical Allograft
100% Mineralized Cortical Allograft

.25 mm - 1.0 mm Particle Size

SMIN050	0.5 cc
SMIN100	1.0 cc
SMIN150	1.5 cc
SMIN250	2.5 cc



1.0 mm - 2.0 mm Particle Size

MIN050	0.5 cc
MIN100	1.0 cc
MIN150	1.5 cc
MIN250	2.5 cc





Zcore™
Porcine Xenograft Particulate

Zcore™ Porcine Xenograft Particulate

.25 mm - 1.0 mm Particle Size

ZS050	0.5 cc
ZS100	1.0 cc
ZS200	2.0 cc
ZS400	4.0 cc



Zcore™ Porcine Xenograft Particulate

1.0 mm - 2.0 mm Particle Size

ZL100	1.0 cc
ZL200	2.0 cc



Zcore™ Porcine Xenograft Particulate in Syringe

.25 mm - 1.0 mm Particle Size

ZY025	0.25 cc
ZY050	0.5 cc



not actual size.

Features & Benefits of Zcore™

Zcore™ is an osteoconductive, porous, anorganic bone mineral with a carbonate apatite structure derived from porcine cancellous bone.

Interconnecting pores

Interconnecting macroscopic and microscopic porous structure supports the formation and ingrowth of new bone

88% to 95% void space

88% to 95% Void Space: hyper-porosity of porcine cancellous matrix and intra-particle space facilitated by rough particle morphology reduce bulk density of the graft, allowing greater empty space for new bone growth*

Porcine cancellous bone

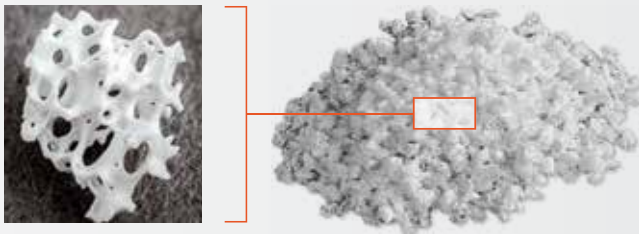
Derived from porcine cancellous bone, eliminating any risk of BSE transmission

Processed using minimal heat

Heat treated to an optimal temperature that ensures a degree of crystallinity¹ consistent with native bone mineral to allow for remodeling of the healing bone

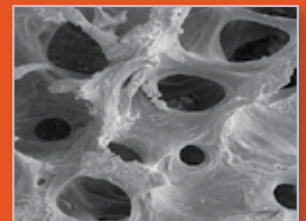
*0.25 mm – 1.0 mm particle size = 88% void space, 1.0 mm – 2.0 mm = 95% void space

1. Li ST, Chen HC, Yuen D. Isolation and Characterization of a Porous Carbonate Apatite From Porcine Cancellous Bone. Science, Technology, Innovation, Aug. 2014: 1–13.



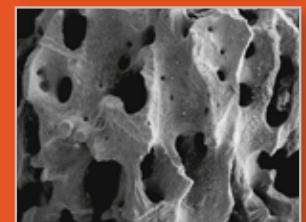
SEM of Processed Human Bone

Magnification x50



SEM of Zcore™ Porcine Xenograft Particulate

Magnification x50



NovaBone® Dental Putty & NovaBone® Morsels

the synthetic solution to bone regeneration



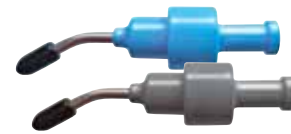
NovaBone® Putty in Cartridges

Cartridges

NA3620	0.5 cc	(2 per box)
NA3640	0.5 cc	(4 per box)
NA4640	0.25 cc	(4 per box)

Cartridge Applicator Gun

NA4600 (Fits all cartridges)



NovaBone® Putty in Syringes

NA1610	0.5 cc
NA1611	1.0 cc
NA1612	2.0 cc



NovaBone® Putty in Trays

NA0660	0.5 cc	(6 per box)
NA0610	0.5 cc	(1 per box)
NA0622	1.5 cc	(2 per box)



NovaBone® Morsels in Trays

NovaBone® Morsels is a particulate product made up of a crystalline composite calcium phosphosilicate (CPS). The particle size ranges from 0.5 mm – 1.0 mm with pore sizes ranging from 0.05 mm – 0.10 mm. The pore size results in slow and sustained resorption that is completed over a 12–18 month period. The morsels have an “osteostimulative” effect similar to NovaBone® Dental Putty.

EU0820	1.3 cc	(2 per box)
EU0822	4.0 cc	(2 per box)



not actual size.

Overview of NovaBone® Dental Putty

Unique Formulation of NovaBone® Dental Putty

NovaBone® Putty is 100% synthetic and fully resorbable. It is composed of calcium phosphosilicate (CPS) particles in a bimodal size distribution combined with a polyethylene glycol and glycerine binder. The binder improves handling and aids in maintaining the space between the particles, which facilitates revascularization after implantation. The bioactive CPS component makes up 70% of the putty by volume. Upon implantation, the water soluble binder is absorbed within 24 to 72 hours, creating a 3-dimensional porous scaffold that facilitates diffusion of blood and tissue fluids through the matrix. The smaller CPS particles (32-125 µm) are more rapidly resorbed, providing the initial burst of Ca and P ions. Subsequently, the larger particles (90-710 µm) react, and being more resistant to resorption, continue the process of bone regeneration.

Osteostimulative & Osteoconductive

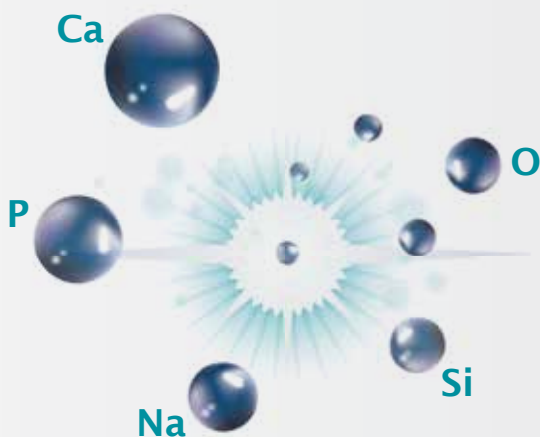
Unlike most synthetic grafts that are only osteoconductive, bioactive NovaBone® Putty also has an “osteostimulative” effect. After implantation, surface reactions result in absorption of the graft material, a controlled release of Si, Ca, and P ions, and concurrent new bone formation. These surface reactions result in an osteostimulative effect, defined as the stimulation of osteoblast proliferation *in vitro* as evidenced by

increased DNA content and elevated osteocalcin and alkaline phosphatase levels. *In vitro* gene array analysis has confirmed that when human primary osteoblasts are exposed to extracts of CPS, upregulation of several gene families occurs.

Superior Delivery System & Handling

NovaBone® Putty is available in multiple delivery options: trays, pre-filled syringes, and a unique industry-first cartridge delivery system. NovaBone® is the only graft material in the world that is available in disposable uni-dose cartridges. The cartridges simplify dispensing of the graft, especially in hard-to-reach areas, thus facilitating minimally invasive techniques (and hard-to-access defects such as gaps in immediate implant placement and crestal-approach sinus lifts). Cartridges are available in various sizes and are used in conjunction with NovaBone®’s cartridge delivery system; each cartridge holds 0.25 to 1.0 cc’s of putty.

NovaBone® Putty significantly simplifies bone graft handling and delivery. It is ready to use and extremely user friendly. It is pre-mixed, cohesive, moldable, and adaptable. NovaBone® Putty is stable at room temperature, does not require refrigeration, has a 4-year shelf-life, and appears radiodense on radiographs.



Cytoplast™ RTM Collagen

Type I bovine collagen membrane



shown actual size.



15 mm x 20 mm

RTM1520 (2 membranes per box)



20 mm x 30 mm

RTM2030 (2 membranes per box)



30 mm x 40 mm

RTM3040 (2 membranes per box)

Features & Benefits

Manufactured from highly purified type I bovine achilles tendon

Safe for the patient

26 – 38 week resorption time

Long predictable resorption time limits the risk of particle loss due to premature resorption

High tensile strength

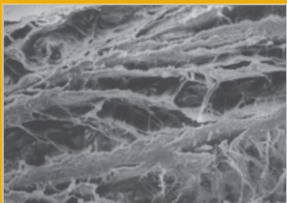
You can suture or tack the membrane in place without tearing

Cell occlusive

Prevents epithelial down growth

Optimized flexibility

Stiff enough for easy placement, yet easily drapes over ridge



Multi-layer construction allows tissue integration into outer layer, while preventing direct passage of bacteria and epithelial cells.

“...I am impressed with its *handling*, but most importantly, I am impressed with its *results*.”

Jerald Rosenberg, DMD; Periodontist

Cytoplast™ RTMPlug, RTMFoam, & RTMTape

Absorbable Wound Dressing | Type I & Type III bovine collagen

shown actual size.

RTMPlug

1 cm x 2 cm

RTMPLUG10 (10 per box)

NEW

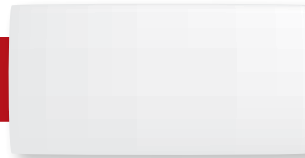


RTMFoam

2 cm x 4 cm (3 mm thick)

RTMFOAM10 (10 per box)

NEW

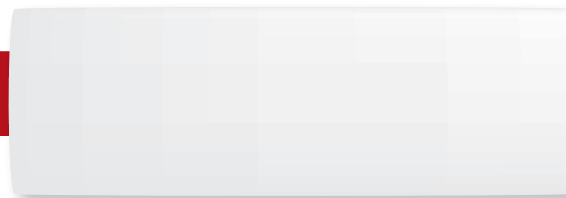


RTMTape

2.5 cm x 7.5 cm (1 mm thick)

RTMTAPE10 (10 per box)

NEW



Wound dressings will be
essentially resorbed within 30 days

Applications:

- Surgical wounds
- Periodontal surgical wounds
- Extraction sites
- Dental sores
- Oral ulcers (non-infected or viral)
- Suture sites
- Burns
- Traumatic wounds



Vitala®

Porcine derived collagen membrane | Substantially resorbed in 26 weeks

shown actual size.



15 mm x 20 mm
Vit1520



13 mm x 25 mm
Vit1325



20 mm x 30 mm
Vit2030



30 mm x 40 mm
Vit3040



Features & Benefits

Natural

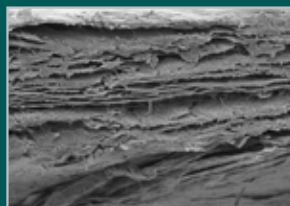
Manufactured using a proprietary protocol designed to maintain the natural, microporous, 3-layered architecture of the tissue without the need for cross-linking chemicals and agents

Durable

Designed to resist tearing during placement, Vitala® is naturally strong

Adaptable

The natural collagen structure provides a unique combination of supple handling and ideal defect adaptability. Because both sides are smooth, either side may be placed against the defect



1000x magnification



Excellent tensile strength



Supple and flexible

Cytoplast™ TXT-200 & TXT-200 Singles

Micro-textured, high-density PTFE membrane

Most popular
membrane for
socket grafting

TXT-200 Singles

12 mm x 24 mm

TXT1224-1 (1 membrane per box)

TXT1224 (10 membranes per box)

shown actual size.



TXT-200

25 mm x 30 mm

TXT2530-1 (1 membrane per box)

TXT2530 (4 membranes per box)



Features & Benefits

Non-Resorbable

Won't resorb prematurely – you dictate healing time

100% Dense (non-expanded) PTFE

Impervious to bacteria (pore size less than 0.3 µm)

Data on file

Purposely leave the membrane exposed

Preservation of the soft tissue architecture and
keratinized mucosa

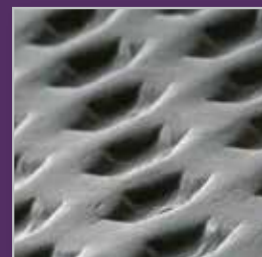
Soft tissue attaches, but doesn't grow through the membrane

Exposed membrane allows for non-surgical removal;
no anesthesia required

Hexagonal dimples increase surface area

Designed to increase membrane stabilization

The patented Regentex™
surface helps stabilize the
membrane and the soft
tissue flap. Hexagonal
surface dimples provide a tex-
tured surface that increases the
area available for cellular attach-
ment without increasing porosity.
U.S. Patent # 5,957,690



"I always know, *in advance*, the results
of my bone grafting when I use
Cytoplast™ TXT-200 as a membrane.
Why bother with other membranes?"

Mark Cohen, DDS; Periodontist

Cytoplast™ Titanium-Reinforced

Titanium-reinforced, high-density PTFE membrane



Anterior Narrow

12 mm x 24 mm

Designed for narrow single-tooth extraction sites, especially where one bony wall is missing

Ti-250 (250 µm thick)

Ti250ANL-1

Ti250ANL-2

Ti-150 (150 µm thick)

Ti150ANL-1

Ti150ANL-2

shown actual size.

(1 membrane per box)

(2 membranes per box)



Anterior Singles

14 mm x 24 mm

Designed for single-tooth extraction sites, especially where one or more bony walls are missing

Ti250AS-1

Ti250AS-2

Ti150AS-1

Ti150AS-2

(1 membrane per box)

(2 membranes per box)



Buccal

17 mm x 25 mm

Designed for large buccal defects

Ti250BL-1

Ti250BL-2

Ti150BL-1

Ti150BL-2

(1 membrane per box)

(2 membranes per box)



Posterior Singles

20 mm x 25 mm

Designed for posterior extraction sites and limited ridge augmentation

Ti250PS-1

Ti250PS-2

Ti150PS-1

Ti150PS-2

(1 membrane per box)

(2 membranes per box)



Posterior Singles T²

25 mm x 36 mm

Designed for posterior extraction sites and limited ridge augmentation

Ti250PST-1

Ti250PST-2

Ti150PST-1

Ti150PST-2

(1 membrane per box)

(2 membranes per box)



Posterior Large

25 mm x 30 mm

Designed for large bony defects, including ridge augmentation

Ti250PL-1

Ti250PL-2

Ti150PL-1

Ti150PL-2

(1 membrane per box)

(2 membranes per box)





**Ti-150 membranes are 40% thinner than Ti-250 membranes, providing clinicians another handling option in Cytoplast™ Titanium-Reinforced Membranes.*

Posterior Large T²

30 mm x 41 mm

Designed for large bony defects, including ridge augmentation

XL

30 mm x 40 mm

Designed for very large bony defects, including ridge augmentation

XLK

30 mm x 40 mm

Designed for very large bony defects, including ridge augmentation

Anterior Perio

13 mm x 19 mm

Designed to fit periodontal defects in the anterior

Posterior Perio

13 mm x 18 mm

Designed to fit periodontal defects in the posterior

Ti-250 (250 µm thick)

Ti250PLT-1
Ti250PLT-2

Ti250XL-1
Ti250XL-2

Ti250XLK-1
Ti250XLK-2

Ti250AP-1
Ti250AP-2

Ti250PP-1
Ti250PP-2

Ti-150 (150 µm thick)

Ti150PLT-1
Ti150PLT-2

Ti150XL-1
Ti150XL-2

Ti150XLK-1
Ti150XLK-2

Ti150AP-1
Ti150AP-2

Ti150PP-1
Ti150PP-2

shown actual size.

(1 membrane per box)

(2 membranes per box)

(1 membrane per box)

(2 membranes per box)

(1 membrane per box)

(2 membranes per box)

(1 membrane per box)

(2 membranes per box)

(1 membrane per box)

(2 membranes per box)



Cytoplast™ Titanium-Reinforced

Titanium-reinforced, high-density PTFE membrane



Anterior Trans Crestal

24 mm x 38 mm

Designed for bony defects between adjacent teeth, including ridge augmentation

NEW

Ti-250
(250 µm thick)

Ti250ATC-1

Ti250ATC-2

Ti-150
(150 µm thick)

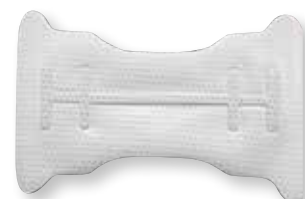
Ti150ATC-1

Ti150ATC-2

shown actual size.

(1 membrane per box)

(2 membranes per box)



Posterior Trans Crestal

38 mm x 38 mm

Designed for large bony defects between adjacent teeth, including ridge augmentation

NEW

Ti250PTC-1

Ti250PTC-2

Ti150PTC-1

Ti150PTC-2

(1 membrane per box)

(2 membranes per box)



Posterior Distal

38 mm x 38 mm

Designed for large bony defects, including distal extension of the posterior ridge

NEW

Ti250PD-1

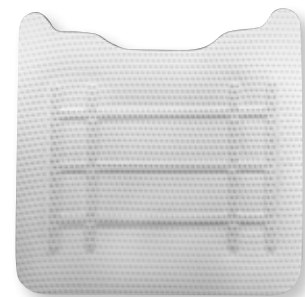
Ti250PD-2

Ti150PD-1

Ti150PD-2

(1 membrane per box)

(2 membranes per box)



K2

40 mm x 50 mm

Designed for the largest bony defects, including ridge augmentation

NEW

Ti250K2-1

Ti250K2-2

Ti150K2-1

Ti150K2-2

(1 membrane per box)

(2 membranes per box)



Cytoplast™ PTFE Suture

The soft monofilament suture

Features & Benefits

100% Medical Grade PTFE

Biologically inert

Monofilament

Doesn't wick bacteria

Soft (not stiff)

Comfortable for patients

Little to no package memory

Excellent handling, knots securely

Non-resorbable

Keeps the surgical site reliably closed

300 Series Stainless Steel Needles

All Cytoplast™ PTFE Sutures now have 300 series stainless steel needles, the gold standard material for suture needles. Tests comparing the new needles to previous needles show a substantial increase in needle strength, initial needle sharpness, and sustained needle sharpness. Tests show that the new 300 series needles are less likely to bend, require less force to penetrate, and maintain sharpness longer. Additionally, CS0618RC and CS06PREM now have longer (121% and 41%, respectively) and geometrically finer precision cutting edges. Data on file

12 sutures per box

CS0618RC

For dental implant and bone grafting procedures

- Size: USP 4-0
- 16 mm 3/8 Circle Precision Reverse Cutting



CS0618PREM

For dental implant and bone grafting procedures where a smaller reverse cutting needle is desired

- Size: USP 4-0
- 13 mm 3/8 Circle Precision Reverse Cutting



CS0618PERIO

For soft tissue grafts and delicate tissues that require an atraumatic needle

- Size: USP 4-0
- 13 mm 1/2 Circle Taper Point



CS051819

Most popular needle in dentistry and most popular suture size

- Size: USP 3-0
- 19 mm 3/8 Circle Reverse Cutting



CS0518

Most popular size for dental implant and bone grafting procedures

- Size: USP 3-0
- 16 mm 3/8 Circle Reverse Cutting



CS0418

Popular for procedures where a longer needle is desired

- Size: USP 2-0
- 19 mm 3/8 Circle Reverse Cutting





Master-Pin-Control

Revolutionary hybrid pin system

NEW

Heisinger since 1888

The Master-Pin-Control Bone Management® system is used for the fixation of membranes (absorbable and non-absorbable) in order to avoid micro-mobility of the graft. The pins have an extremely sharp tip that allows precise placement into cortical bone. Mini-threads on the pins make them a hybrid of a screw and pin. The threads on the pins increase the surface area of the shaft, resulting in pin stability, while also making removal of the pins possible with the included screwdriver.

Master-Pin-Control

BMP00

- (34) Pins
- Master-Pin-Tray
- Screw Driver For Pin Removal
- Fixation Holder
- Initial Bur
- Twist Drills
 - (2) 0.6 mm twist drills
 - (2) 0.8 mm twist drills



Master-Pin-Basic

BMPBA

- (10) Pins
- Master-Pin-Tray
- Screw Driver For Pin Removal
- Fixation Holder
- Initial Bur
- Twist Drills
 - (2) 0.6 mm twist drills
 - (2) 0.8 mm twist drills



Replacement Pins

10 Pins

MP10

Decortication Bur

1.2 mm diameter x 4.0 mm long
decortication bur with drill stop

203S-012-RA



Pro-Fix™ Membrane Fixation

Precision Fixation System

Pro-fix™ Membrane Fixation Screws are designed as an attractive alternative to using tacks for membrane stabilization. Easy pick-up, solid stability of the screw during transfer to the surgical site, and easy placement make membrane fixation fast and easy.

Tray and organizer dial are designed to store all Pro-fix™ components including up to 100 membrane fixation, tenting, and bone fixation screws

Blades are designed to work universally with all Pro-fix™ membrane fixation, tenting, and bone fixation screws



Membrane Fixation Kit

PFMK20

- (1) Autoclavable Tecapro™ storage tray w/ screw organizer dial
- (1) Stainless steel driver handle
- (1) 76 mm cruciform driver blade
- (1) 56 mm cruciform driver blade
- (20) 1.5 x 3.0 mm self-drilling membrane fixation screws



Self-Drilling Membrane Fixation Screws

1.5 mm x 3.0 mm  actual size

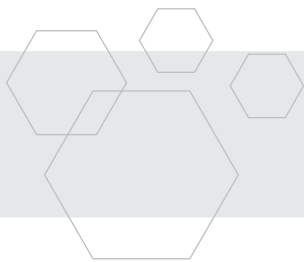
- | | |
|-----------|---------|
| 5 screws | PFMF-5 |
| 10 screws | PFMF-10 |
| 20 screws | PFMF-20 |



Individual Components

- | | |
|---|--------|
| Stainless Steel Driver Handle | PFDH |
| 76 mm Cruciform Driver Blade | PFDB |
| 56 mm Cruciform Driver Blade | PFDB56 |
| Contra Angle Blade | PFDBCA |
| (24 mm long; 10 mm exposed distal length) | |
| Autoclavable Tecapro™ storage tray | PFT |
| 1.2 mm diam. Latch Type Pilot Drill | PFPD |





Pro-Fix™ Tenting

Precision Fixation System

Tenting Kit

PFTK12

- (1) Autoclavable Tecapro™ storage tray w/ screw organizer dial
 - (1) Stainless steel driver handle
 - (1) 76 mm cruciform driver blade
 - (1) 56 mm cruciform driver blade
 - (4) 1.5 x 3.0 mm self-drilling tenting screws (7 mm total length: see below)
 - (4) 1.5 x 4.0 mm self-drilling tenting screws (8 mm total length: see below)
 - (4) 1.5 x 5.0 mm self-drilling tenting screws (9 mm total length: see below)
- For individual Pro-Fix™ driver and container components, see page 19.

Pro-fix™ Tenting Screws are designed with a self-drilling tip, polished neck, and broader head to maintain space under resorbable and non-resorbable membranes in horizontal and vertical bone regeneration procedures.

Self-Drilling Tenting Screws

1.5 mm x 3.0 mm

3.0 mm polished neck + 4.0 mm threaded portion = 7 mm total length

- | | |
|----------|--------|
| 1 screw | PFT3 |
| 5 screws | PFT3-5 |

 actual size



1.5 mm x 4.0 mm

4.0 mm polished neck + 4.0 mm threaded portion = 8 mm total length

- | | |
|----------|--------|
| 1 screw | PFT4 |
| 5 screws | PFT4-5 |

 actual size

1.5 mm x 5.0 mm

5.0 mm polished neck + 4.0 mm threaded portion = 9 mm total length

- | | |
|----------|--------|
| 1 screw | PFT5 |
| 5 screws | PFT5-5 |

 actual size

Fully Threaded Tenting Screws

1.5 mm x 8.0 mm

- | | |
|---------|------|
| 1 screw | PFT8 |
|---------|------|

 actual size

1.5 mm x 10.0 mm

- | | |
|---------|-------|
| 1 screw | PFT10 |
|---------|-------|

 actual size



Pro-Fix™ Bone Fixation

Precision Fixation System



Bone Fixation Kit

PFBK12

- (1) Autoclavable Tecapro™ storage tray w/ screw organizer dial
- (1) Stainless steel driver handle
- (1) 76 mm cruciform driver blade
- (1) 56 mm cruciform driver blade
- (1) 1.2 mm diameter latch type pilot drill
- (2) 1.5 x 8 mm bone fixation screws
- (4) 1.5 x 10 mm bone fixation screws
- (4) 1.5 x 12 mm bone fixation screws
- (2) 1.5 x 14 mm bone fixation screws

For individual Pro-Fix™ driver and container components, see page 19.

Pro-fix™ Bone Fixation Screws are designed with finer pitched, self-tapping threads that give the screws greater clamping force while using less driver torque. The screws' threads are equipped with a cutting flute that allows for easier insertion into harder bone. The screws are placed into a 1.2 mm pre-drilled pilot hole.

Self-Tapping Bone Fixation Screws

1.5 mm x 8 mm

1 screw

PFB8

5 screws

PFB8-5

1.5 mm x 10 mm

1 screw

PFB10

5 screws

PFB10-5

1.5 mm x 12 mm

1 screw

PFB12

5 screws

PFB12-5

1.5 mm x 14 mm

1 screw

PFB14

5 screws

PFB14-5

 actual size

 actual size

 actual size

 actual size



Micross

Minimally invasive cortical bone collector



not actual size.

Holds up to 0.25 cc at a time

4049 (1 sterile scraper per package)

Applications

- Extraction defects
- Periodontal defects
- Sinus lift procedures

Harvesting Sites

- Oblique external line with tunnel
- Lingual bone
- Sinus window
- Palate
- Zygomatic area with tunnel
- Small areas near the defect

Features & Benefits

5.0 mm diameter

Device can be used in hard-to-reach intraoral sites using a tunnel technique

Bone is collected with coagulated blood

Graft has high biological plasticity, making it easy to handle and mold

Superior harvesting method

The manual harvesting technique allows graft to retain cell viability that can be compromised with other harvesting techniques that mill, grind, or potentially overheat bone

Safe

The disposable scraper is sterile and allows clinicians to harvest autogenous bone, which eliminates any chance of disease transmission



The cannula's 5 mm external diameter allows the Micross to be easily inserted into tissue tunnels.

Safescraper® Twist - Curve Version

Versatile cortical bone collector

Holds up to 2.5 cc at a time

3987 (3 sterile scrapers per package)



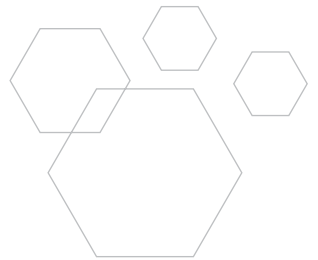
not actual size.

Applications

- Extraction defects
- Periodontal defects
- Sinus lift procedures
- Ridge augmentation

Harvesting Sites

- Oblique external line w/ tunnel
- Ramus
- Mandibular symphysis
- Sinus window
- Lingual bone
- Zygomatic area
- Nasal spine
- Palate
- Small areas near the defect



Features & Benefits

Ergonomic design

Cortical bone harvesting is easily achieved from intraoral sites with a minimally invasive approach

2.5 cc collection chamber

Large amounts of bone may be collected at once

Bone is collected with coagulated blood

Graft has high biological plasticity, making it easy to handle and mold

Superior harvesting method

The manual harvesting technique allows graft to retain cell viability that can be compromised with other harvesting techniques that mill, grind, or potentially overheat bone

Safe

The disposable scraper is sterile and allows clinicians to harvest autogenous bone, which eliminates any chance of disease transmission

A 160° blade allows clinicians to collect bone from any bony surface.



The Safescraper® Twist's transparent chamber holds up to 2.5 cc of bone, which can be used alone or mixed in combination with other graft materials.

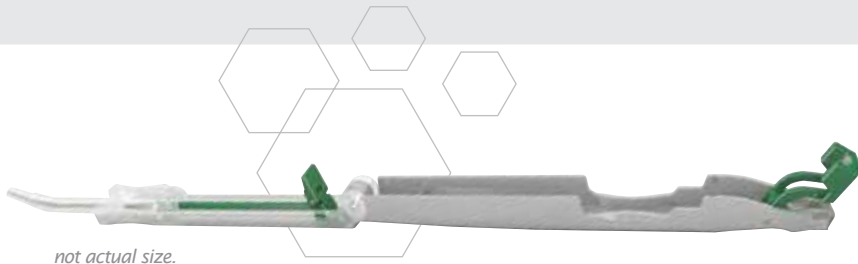


"This unit works really well and has nice contours to use in difficult harvesting sites."

Tom Faerber, DMD; Oral and Maxillofacial Surgeon

Smartscraper

Cortical bone collector and syringe in one



Holds up to 0.3 cc at a time

4890 (3 sterile scrapers per package)

NEW

Applications

- Extraction defects
- Periodontal defects
- Sinus lift procedures
- Ridge augmentation

Harvesting Sites

- Oblique external line w/ tunnel
- Ramus
- Mandibular symphysis
- Sinus window
- Lingual bone
- Zygomatic area
- Nasal spine
- Palate
- Small areas near the defect

Features & Benefits

Versatile all-in-one design

One instrument contains the blade for harvesting the autogenous bone particulate and the syringe for delivering the particulate to the defect

3.0 mm syringe applicator tip

Small applicator tip means the syringe can be used to insert graft into transcrestal sinus lifts and into defects where access is restricted

Superior harvesting method

The manual harvesting technique allows graft to retain cell viability that can be compromised with other harvesting techniques that mill, grind, or potentially overheat bone

Safe

The disposable scraper is sterile and allows clinicians to harvest autogenous bone, which eliminates any chance of disease transmission



The Smartscraper is opened with a simple movement; the syringe in which the bone particulate has been collected can then be used to place graft directly into areas with limited access.



R. Quétin Bone-Mill

The Bone-Mill with "bite"

NEW

Autogenous Bone Mill

1000 (Sold with tablestand and rubber mat for stabilization)



Features & Benefits

Designed to work on different bone types

The R. Quétin bone mill grinds autogenous bone of various densities, including compact cortical bone, with minimal effort

Versatile

By varying the pressure on the bone pestle, particles ranging from 0.3 mm – 1.0 mm in size can be produced

Grinds small bone particles

Particles as small as 3.0 mm can be ground resulting in little to no waste of harvested autogenous bone

Safe and Clean

No metal residue is left in the graft from grinding wheel

Selection of Applicable References

Membrane References

- Ronda M, Stacchi C. A Novel Approach for the Coronal Advancement of the Buccal Flap. *Int J Periodontics Restorative Dent*. 2015 Nov-Dec;35(6):795-801.
- Urban IA, Monje A, Wang HL. Vertical Ridge Augmentation and Soft Tissue Reconstruction of the Anterior Atrophic Maxillae: A Case Series. *Int J Periodontics Restorative Dent*. 2015 Sep-Oct;35(5):613-23.
- Al-Hezaimi K, Iezzi G, Rudek I, Al-Daafas A, Al-Hamdan K, Al-Rasheed A, Javed F, Piattelli A, Wang HL. Histomorphometric Analysis of Bone Regeneration Using a Dual Layer of Membranes (dPTFE Placed Over Collagen) in Fresh Extraction Sites: A Canine Model. *J Oral Implantol*. 2015 Apr;41(2):188-95.
- Ronda M, Rebaudi A, Torelli L, Stacchi C. Expanded vs. dense polytetrafluoroethylene membranes in vertical ridge augmentation around dental implants: a prospective randomized controlled clinical trial. *Clin Oral Implants Res*. 2014 Jul;25(7):859-66.
- Barboza EP, Stutz B, Mandarino D, Rodrigues DM, Ferreira VF. Evaluation of a dense polytetrafluoroethylene membrane to increase keratinized tissue: a randomized controlled clinical trial. *Implant Dent*. 2014 Jun;23(3):289-94.
- Urban IA, Lozada JL, Jovanovic SA, Nagursky H, Nagy K. Vertical Ridge Augmentation with Titanium-Reinforced, Dense-PTFE Membranes and a Combination of Particulated Autogenous Bone and Anorganic Bovine Bone-Derived Mineral: A Prospective Case Series in 19 Patients. *Int J Oral Maxillofac Implants*. 2014 Jan-Feb;29(1):185-93.
- Carbonell JM, Martin IS, Santos A, Pujol A, Sanz-Moliner JD, Nart J. High-density polytetrafluoroethylene membranes in guided bone and tissue regeneration procedures: a literature review. *Int J Oral Maxillofac Surg*. 2014 Jan;43(1):75-84.
- Vittorini Orgeas G, Clementini M, De Risi V, de Sanctis M. Surgical techniques for alveolar socket preservation: a systematic review. *Int J Oral Maxillofac Implants*. 2013 Jul-Aug;28(4):1049-61.
- Bagoff R, Mamidwar S, Chesnoiu-Matei I, Ricci J, Alexander H, Tovar N. Socket preservation and sinus augmentation using a medical grade calcium sulfate hemihydrate and mineralized irradiated cancellous bone allograft composite. *J Oral Implantol*. 2013 Jun;39(3):363-71.
- Al-Hezaimi K, Rudek I, Al-Hamdan KS, Javed F, Nooh N, Wang HL. Efficacy of using a dual layer of membrane (dPTFE placed over collagen) for ridge preservation in fresh extraction sites: a micro-computed tomographic study in dogs. *Clin Oral Implants Res*. 2013 Oct;24(10):1152-7.
- Waasdorp J, Feldman S. Bone regeneration around immediate implants utilizing a dense polytetrafluoroethylene membrane without primary closure: A report of 3 cases. *J Oral Implantol*. 2013;39:355-361.
- Zafiropoulos GG, Deli G, Vittorini G, Hoffmann O. Implant placement and immediate loading with fixed restorations in augmented sockets. Five year results. A case report. *J Oral Implantol*. 2013; 39:372-379.
- Annibali S, Bignozzi I, Sammartino G, La Monaca G, Cristalli MP. Horizontal and Vertical Ridge Augmentation in Localized Alveolar Deficient Sites: A Retrospective Case Series. *Implant Dent*. 2012 Jun;21(3):175-185.
- Levin B. Immediate temporization of immediate implants in the esthetic zone: Evaluating survival and bone maintenance. *Compendium* 2011;32:52-62.
- Zafiropoulos GG, Kasaj A, Hoffmann O. Immediate implant placement in fresh mandibular molar extraction socket: 8 year results. A case report. *J Oral Implantol*. 2010;36(2):145-151.
- Barboza EP, Stutz B, Ferreira VF, Carvalho W. Guided bone regeneration using nonexpanded polytetrafluoroethylene membranes in preparation for dental implant placements – A report of 420 cases. *Implant Dent*. 2010;19:2-7.
- Zafiropoulos GG, Deli G, Bartee BK, Hoffman O. Single-tooth implant placement and loading in fresh and regenerated extraction sockets. Five-year results: A case series using two different implant designs. *J Periodontol*. 2010;81:604-615.
- Zafiropoulos GG, Hoffmann O, Kasaj A, Willebrand B, Deli G, Tatakis DN. Mandibular molar root resection versus implant therapy: A retrospective nonrandomized study. *J Oral Implantol*. 2009;35:52-62.
- Fotek PD, Neiva RF, Wang HL. Comparison of dermal matrix and polytetrafluoroethylene membrane for socket bone augmentation: A clinical and histologic study. *J Periodontol*. 2009;80:776-785.
- Hoffman O, Bartee BK, Beaumont C, Kasaj A, Deli G, Zafiropoulos GG. Alveolar bone preservation in extraction sockets using non-resorbable dPTFE membranes: A retrospective non-randomized study. *J Periodontol*. 2008;79:1355-1369.
- Barber HD, Lignelli J, Smith BM, Bartee BK. Using a dense PTFE membrane without primary closure to achieve bone and tissue regeneration. *J Oral Maxillofac Surg*. 2007;65:748-752.
- Walters SP, Greenwell H, Hill M, Drisko C, Pickman K, Scheetz JP. Comparison of porous and non-porous teflon membranes plus a xenograft in the treatment of vertical osseous defects: A clinical reentry study. *J Periodontol*. 2003;74:1161-1168.
- Bartee BK. Extraction site reconstruction for alveolar ridge preservation. Part 1: Rationale and material selection. *J Oral Implantol*. 2001;27:187-193.
- Bartee BK. Extraction site reconstruction for alveolar ridge preservation. Part 2: Membrane-assisted surgical technique. *J Oral Implantol*. 2001;27:194-197.
- Lamb JW III, Greenwell H, Drisko C, Henderson RD, Scheetz JP, Rebitski G. A comparison of porous and non-porous teflon membranes plus demineralized freeze-dried bone allograft in the treatment of class II buccal/lingual furcation defects: A clinical reentry study. *J Periodontol*. 2001;72:1580-1587.
- Bartee BK. Evaluation of a new polytetrafluoroethylene guided tissue regeneration membrane in healing extraction sites. *Compend Contin Educ Dent* 1998;19:1256-1264.
- Bartee BK, Carr JA. Evaluation of a high-density polytetrafluoroethylene (n-PTFE) membrane as a barrier material to facilitate guided bone regeneration in the rat mandible. *J Oral Implantol*. 1995;21:88-95.
- Bartee BK. The use of high-density polytetrafluoroethylene membrane to treat osseous defects: Clinical reports. *Implant Dent*. 1995;4:21-26.

Selection of Applicable References

Combination Allograft References

- Chan HL, Benavides E, Tsai CY, Wang HL. A Titanium Mesh and Particulate Allograft for Vertical Ridge Augmentation in the Posterior Mandible: A Pilot Study. *Int J Periodontics Restorative Dent*. 2015 Jul-Aug;35(4):515-22.
- Borg TD, Mealey BL. Histologic healing following tooth extraction with ridge preservation using mineralized versus combined mineralized-demineralized freeze-dried bone allograft: a randomized controlled clinical trial. *J Periodontol*. 2015 Mar;86(3):348-55.

Suture References

- Silverstein LH, Kurtzman GM, Shatz PC. Suturing for optimal soft-tissue management. *J Oral Implantol*. 2009;35:82-90.
- Silverstein LH. Suturing principles: Preserving needle edges during dental suturing. *PPAD*. 2005;17:562-564.

Bone Scraper References

- Trombelli L, Farina R, Marzola A, Itró A, Calura G. GBR and autogenous cortical bone particulate by bone scraper for alveolar ridge augmentation: A 2 case report. *Int J Oral Maxillofac Implants*. 2008;23:111-116.
- Zaffe D, D'Avenia F. A novel bone scraper for intraoral harvesting: A device for filling small bone defects. *Clin Oral Implants Res*. 2007;18:525-533.
- Trombelli L, Annunziata M, Belardo S, Farina R, Scabbia A, Guida L. Autogenous bone graft in conjunction with enamel matrix derivative in the treatment of deep periodontal intra-osseous defects: A report of 13 consecutively treated patients. *J Clin Periodontol*. 2006;33:69-75.

NovaBone® References

- Mahesh L, Venkataraman N, Shukla S, Prasad H, Kotsakis GA. Alveolar ridge preservation with the socket-plug technique utilizing an alloplastic putty bone substitute or a particulate xenograft: a histological pilot study. *J Oral Implantol*. 2015 Apr;41(2):178-83.
- Kotsakis GA, Mazor Z. A simplified approach to the minimally invasive antral membrane elevation technique utilizing a viscoelastic medium for hydraulic sinus floor elevation. *Oral Maxillofac Surg*. 2015 Mar;19(1):97-101.
- Ioannou AL, Kotsakis GA, Kumar T, Hinrichs JE, Romanos G. Evaluation of the bone regeneration potential of bioactive glass in implant site development surgeries: a systematic review of the literature. *Clin Oral Investig*. 2015 Mar;19(2):181-91.
- Babbush CA, Kanawati A. Clinical evaluation of 262 osseointegrated implants placed in sites grafted with calcium phosphosilicate putty: a retrospective study. *J Oral Implantol*. 2015 Feb;41(1):63-9.
- Kotsakis GA, Joachim FP, Saroff SA, Mahesh L, Prasad H, Rohrer MD. Histomorphometric evaluation of a calcium-phosphosilicate putty bone substitute in extraction sockets. *Int J Periodontics Restorative Dent*. 2014 Mar-Apr;34(2):233-9.
- Kher U, Mazor Z, Stanitsas P, Kotsakis GA. Implants placed simultaneously with lateral window sinus augmentation using a putty alloplastic bone substitute for increased primary implant stability: a retrospective study. *Implant Dent*. 2014 Aug;23(4):496-501.
- Kotsakis GA, Salama M, Chrepa V, Hinrichs JE, Gaillard P. A randomized, blinded, controlled clinical study of particulate anorganic bovine bone mineral and calcium phosphosilicate putty bone substitutes for socket preservation. *Int J Oral Maxillofac Implants*. 2014 Jan-Feb;29(1):141-51.

- Jodia K, Sadhwani BS, Parmar BS, Anclia S, Sadhwani SB. Sinus elevation with an alloplastic material and simultaneous implant placement: a 1-stage procedure in severely atrophic maxillae. *J Maxillofac Oral Surg*. 2014 Sep;13(3):271-80.
- Kim DM, Nevins M, Camelo M, Nevins ML, Schupbach P, Rodrigues VS, Fiorellini JP. Human histologic evaluation of the use of the dental putty for bone formation in the maxillary sinus: case series. *J Oral Implantol*. 2012 Aug;38(4):391-8.
- Lanka M, Salama M, Kurtzman, Gregori. Socket grafting with calcium phosphosilicate alloplast putty: a histomorphometric evaluation. *Compend Contin Educ Dent*. 2012 Sep;33(8):e109-15.
- Gonshor A, Saroff S, Anderegg C, Joachim F, Charon J, Prasad H, Katta S. Histologic and Clinical Evaluation of a Bioactive Calcium Phosphosilicate Bone Graft Material in Postextraction Alveolar Sockets. *Int J Oral Imp and Clin Res*. 2011;2(2):79-84.
- Hench L. The story of Bioglass. *J Mater Sci Mater Med*. 2006 Nov;17(11):967-78.
- Xynos ID, Edgar AJ, Buttery LD, Hench LL, Polak JM. Gene-expression profiling of human osteoblasts following treatment with the ionic products of Bioglass 45S5 dissolution. *J Biomed Mater Res*. 2001 May;55(2):151-7.



4620 71st Street | Building 78-79
Lubbock, TX 79424
www.osteogenics.com

CUSTOMER SERVICE
INTERNATIONAL
FAX
EMAIL

1.888.796.1923 U.S. and Canada only
+1 806.796.1923
806.796.0059
sales@osteogenics.com

Revised 2.17