

OSSIX™ Bone can be used:

- For socket preservation following any extraction procedure.
- In closed sinus augmentation procedures prior to, or in conjunction with implant placement.
- In lateral and vertical bone augmentation prior to, or in conjunction with implant placement.
- To correct bony defects in implants with peri-implantitis
- In periodontal bony defects around teeth.

Please refer to the IFU before use and for the information on indications, contraindications, warnings and precautions.

OSSIX™ Bone main benefits¹

- Easy to use.
- Undergoes ossification.
- Provides true bone (no remnants).
- No migration of particles.
- Cost effective for doctor and patient.
- In socket preservation can be used without a membrane.
- Predictable results and consistent efficacy.

1. Alveolar Ridge Restoration Using a New Sugar Cross-linked Collagen-Hydroxyapatite Matrix in Canine L-shape Defects. Zubery Y, Goldlust A, Bayer T, Woods S, Jackson N, Soskolne W.A. [Pending Publication]

About Dentsply Sirona Implants

Dentsply Sirona Implants offers comprehensive solutions for all phases of implant therapy, including Ankylos®, Astra Tech Implant System® and Xive® implant lines, digital technologies, such as Atlantis® patient-specific solutions and Siplant® guided surgery, Symbios® regenerative solutions, and professional and business development programs, such as STEPPS™. Dentsply Sirona Implants creates value for dental professionals and allows for predictable and lasting implant treatment outcomes, resulting in enhanced quality of life for patients.

About Dentsply Sirona

Dentsply Sirona is the world's largest manufacturer of professional dental products and technologies, with a 130-year history of innovation and service to the dental industry and patients worldwide. Dentsply Sirona develops, manufactures, and markets a comprehensive solutions offering including dental and oral health products as well as other consumable medical devices under a strong portfolio of world class brands. As The Dental Solutions Company™, Dentsply Sirona's products provide innovative, high-quality and effective solutions to advance patient care and deliver better, safer and faster dentistry. Dentsply Sirona's global headquarters is located in York, Pennsylvania, and the international headquarters is based in Salzburg, Austria. The company's shares are listed in the United States on NASDAQ under the symbol XRAY.

Visit www.dentsplysirona.com for more information about Dentsply Sirona and its products.

THE DENTAL
SOLUTIONS
COMPANY™



Dentsply Sirona does not waive any right to its trademarks by not using the symbols "®" or "™". 32671448-USX-1909 © 2019 Dentsply Sirona. All rights reserved.



OSSIX™ Bone
Ossifying collagen
sponge



OSSIX™ Bone – True bone regeneration the natural way

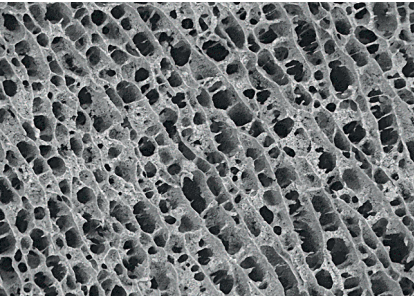
What is OSSIX™ Bone?

OSSIX Bone is a porcine-derived, sponge-like ossifying block for true bone formation. It is a hydroxylapatite and collagen matrix, naturally cross-linked featuring the patented GLYMATRIX® technology.

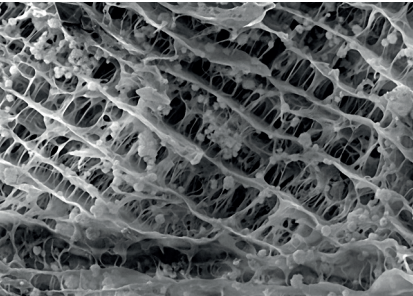
Provides a spacious environment for vascularization, cellular proliferation and bone maturation.

- Bone forming material that contributes to the ossification process.

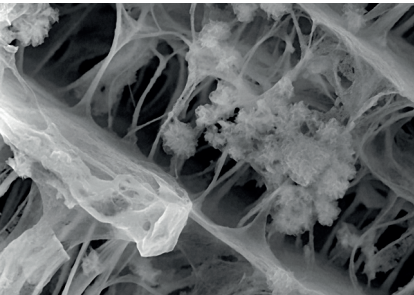
Developed to augment hard tissue in periodontal and implant surgeries, it also utilizes GLYMATRIX® technology featured in OSSIX® Plus and OSSIX® Volumax.



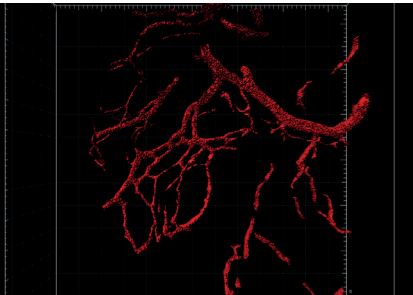
OSSIX Bone – magnified x200.



OSSIX Bone – magnified x400.



OSSIX Bone – magnified x1700.



OSSIX Bone Subcutaneous Implantation Study – 2 Weeks Vascularization.

Cells can be seen integrating into the scaffold (collagen fibers).

OSSIX™ Bone – Your new alternative!

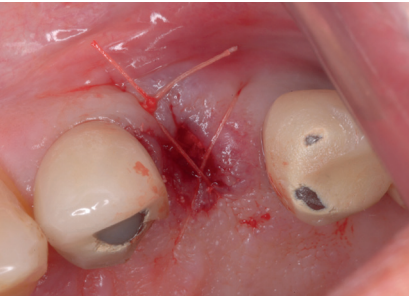
Parameter	OSSIX™ Bone	Autogenous Bone	Allograft (Particulate, Blocks)	Xenograft (Particulate, Blocks)	Synthetic
Safety & biocompatibility	+++	+++	++	++	+ / ++
Bone promotion (efficacy)	+++	+++	++	+	+
Consistent performance	+++	+++	+	+	++
Ease of use	+++	++	++	++	++
No migration	+++	++	++	++	+
Clinical evidence	++	+++	+++	+++	+++
Morbidity	+++	+	+++	+++	+++



OSSIX Bone being hydrated via the blood from the extraction site.



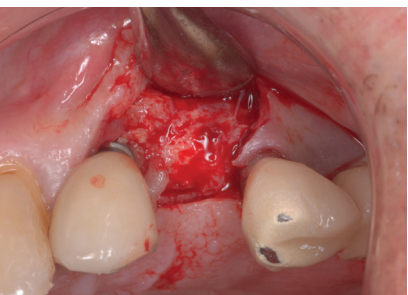
OSSIX Bone filling in the socket (without need for a membrane).



Tissue sutured without primary closure achieved.



Healthy tissue and healed site after 3.5 months post-extraction.



Uncovery of ridge shows osseointegration and ability to place an implant after 3.5 months.

General guidelines for OSSIX™ Bone sizes and different indications

Small (5x5x5mm)
– small socket preservation.

- Single unit sinus elevation.
- Immediate implant with small buccal/dehiscence.

Medium (5x5x10mm)
– large socket preservation (multi-root).

- Multi-unit sinus elevation.
- Lateral ridge augmentation (1-2 units).

Large (5x10x10mm)
– large defect after extraction of multiple teeth.

- Large defect after removal of cyst.
- Large span of lateral bone augmentation.

OSSIX™ Bone is available in 3 sizes

	5 x 5 x 5mm (0.125 cc)	5 x 5 x 10mm (0.25 cc)	5 x 10 x 10mm (0.5 cc)
Order no.	32310009	32310010	32310011

Images shown are not to scale.