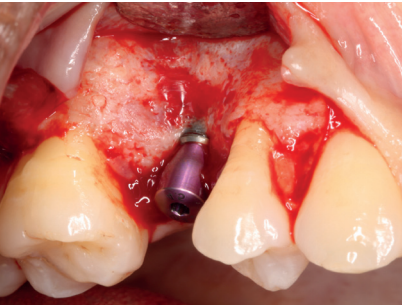


Be prepared for the unforeseen

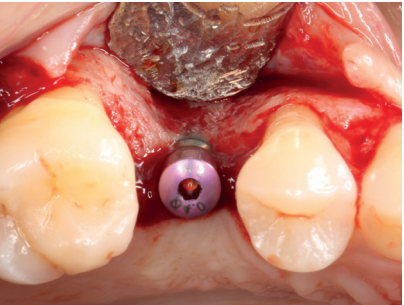
You may encounter buccal dehiscence defects in either 1st or 2nd stage implant procedures. OSSIX® Volumax is suitable for all stages. In cases where extra volume is required, OSSIX Volumax can be folded or placed as a double layer.



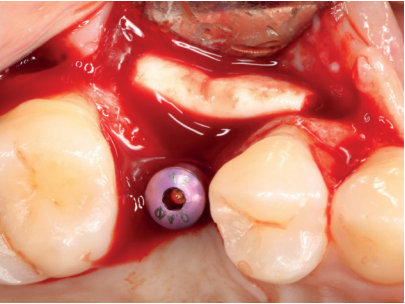
Ridge deficiency before uncover.



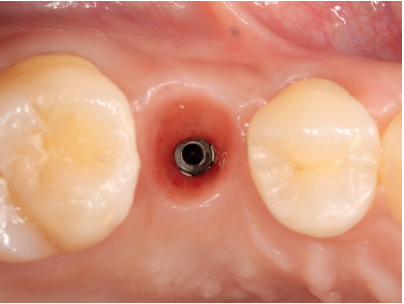
Thin buccal plate.



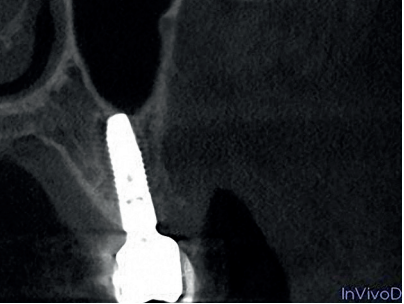
Before graft.



Double layered OSSIX Volumax placed buccally.



Healing after 5 months.



CT scan showing bone formation.

Photographs courtesy of Rodrigo Neiva, Periodontist (Gainesville, FL).

About Dentsply Sirona Implants

Dentsply Sirona Implants offers comprehensive solutions for all phases of implant therapy, including Ankylos®, Astra Tech Implant System® and Xive® implant lines, digital technologies, such as Atlantis® patient-specific solutions and Simplant® guided surgery, Symbios® regenerative solutions, and professional and business development programs, such as STEPPS™. Dentsply Sirona Implants creates value for dental professionals and allows for predictable and lasting implant treatment outcomes, resulting in enhanced quality of life for patients.

About Dentsply Sirona

Dentsply Sirona is the world's largest manufacturer of professional dental products and technologies, with a 130-year history of innovation and service to the dental industry and patients worldwide. Dentsply Sirona develops, manufactures, and markets a comprehensive solutions offering including dental and oral health products as well as other consumable medical devices under a strong portfolio of world class brands. As The Dental Solutions Company™, Dentsply Sirona's products provide innovative, high-quality and effective solutions to advance patient care and deliver better, safer and faster dentistry. Dentsply Sirona's global headquarters is located in York, Pennsylvania, and the international headquarters is based in Salzburg, Austria. The company's shares are listed in the United States on NASDAQ under the symbol XRAY.

Visit [www.dentsplysirona.com](http://www.dentsplysirona.com) for more information about Dentsply Sirona and its products.

THE DENTAL  
SOLUTIONS  
COMPANY™



Dentsply Sirona does not waive any right to its trademarks by not using the symbols "®" or "™". 32671450-USX-1909 © 2019 Dentsply Sirona. All rights reserved.



OSSIX® Volumax  
Volumizing, ossifying  
scaffold





# OSSIX® Volumax

## - For when you need more

### Featuring GLYMATRIX® Technology

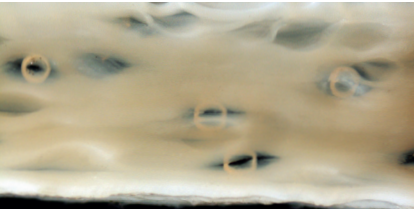
GLYMATRIX Technology is a proprietary collagen cross-linking technology, similar to the naturally occurring glycation process in the human body. The technology uses sugars to cross-link collagen molecules producing a collagen matrix, which can be tailored to deliver products of varying physical properties and customized longevity.

### What is OSSIX® Volumax?

OSSIX Volumax is a volumizing, thick collagen scaffold, featuring GLYMATRIX technology:

- Porcine-derived
- Thick and expands when wet.
- Excellent handling, easy to use, adapts and adheres to the bone.

- Undergoes rapid ossification (in CT scans and histology after one month)\*.
- Safe and effective.



Featuring GLYMATRIX technology, OSSIX Volumax utilizes unique 3L layered technology.

### OSSIX® Volumax can be used:

- To correct dehiscence type defects in implants.
- For extra volume in lateral and vertical bone augmentation procedures. In lateral and vertical augmentation procedures.
- In socket preservation following any extraction procedure.
- In one-stage implant procedures to ensure sufficient buccal bone.
- To augment soft tissue in implants, pontic sites, masking of implants etc. (replacing connective tissue grafts).

Please read Instructions For Use before use and for additional information on indications, contraindications, warnings and precautions.

# OSSIX® Volumax

## - Bone forming scaffold

### Ossification and improved bone growth

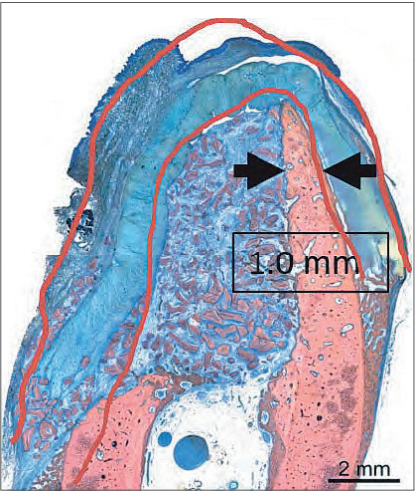
Data clearly demonstrate statistically significant improved bone growth using OSSIX Volumax vs. empty controls. The results also show OSSIX Volumax's mineralization and ossification progress.

OSSIX Volumax gradually integrates into adjacent tissues, and promotes restoration of the defects.

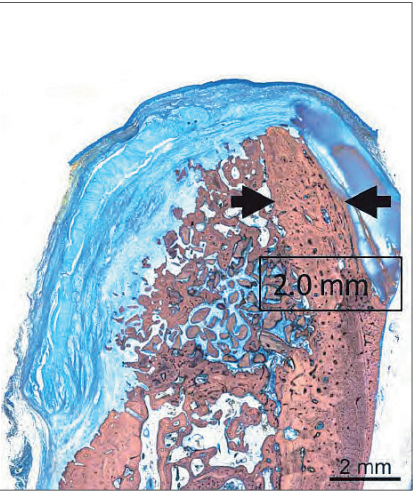
In contact with bone, OSSIX Volumax and OSSIX Plus share the unique quality of mineralization progressing into ossification.

OSSIX Volumax, being a thick scaffold (between 1.5–2mm), has the potential to augment thin tissue around implants, aesthetic deficiencies, and correct residual dehiscence after regenerative procedures.

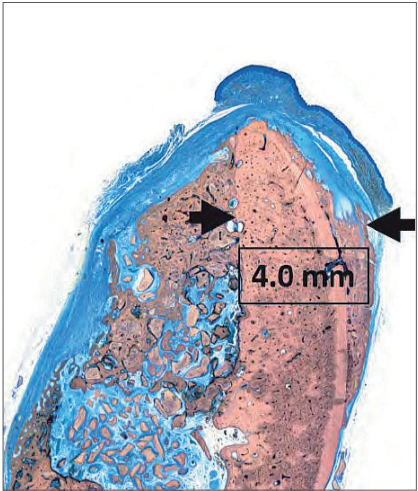
This collagen device has been designed to solve challenges and meet dental regeneration and implant needs.



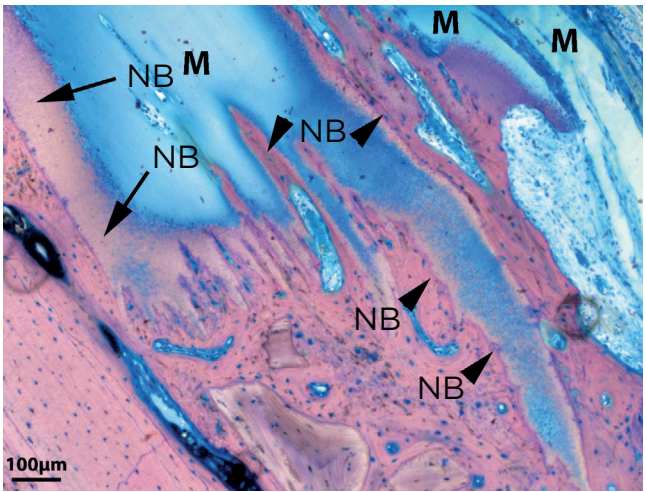
1 month.  
OSSIX Volumax outlined in red. Black arrows show native bone width.



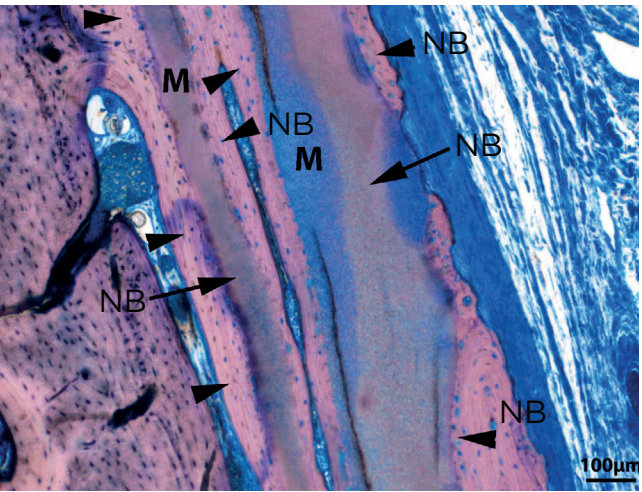
3 months.  
Bone width increases as OSSIX Volumax ossifies.



6 months.  
OSSIX Volumax has continued to ossify and regenerated sufficient bone for implant placement.



3 months.



6 months.

NB = New Bone / M = OSSIX Volumax

### Symbios® + OSSIX® from Dentsply Sirona Implants – Regeneration inspired

Together, Symbios and OSSIX are redefining regeneration and will make this combination portfolio a desired choice for regenerative industry leaders.

Staying true to nature, the Symbios portfolio of products provide options for tissue quantity and quality, achieving a stable foundation for esthetic clinical outcomes. OSSIX, the ossifying brand, features the proprietary, natural cross-linking GLYMATRIX technology in OSSIX® Plus, OSSIX® Volumax and OSSIX™ Bone, with documented, long-term results.

### OSSIX® Volumax is available in 4 sizes

	10 x 12.5mm	15 x 25mm	25 x 30mm	10 x 40mm
Order no.	32905287	32905288	32905289	32905290

